

$\Delta L_w = 24 \text{ dB}$

100% regenerated crumb rubber for impact noise isolation of floating slabs and screeds.

- li. Mat dimension: 1m x 13.5m x 4.5mm
- li. Pallet information: 11 rolls/pallet - pallet: 1200x800x1400mm - 620 kg

MECHANICAL PROPERTIES

MAX. TOTAL LOAD 0.10 MPa	MAX. OCCASIONAL LOAD 0.25 MPa	DENSITY ⁽¹⁾ 880 kg/m ³	SURFACE WEIGHT ⁽¹⁾ 3.96 kg/m ²
TENSILE STRENGTH ⁽²⁾ > 0.3 MPa	ELONGATION AT BREAK ⁽²⁾ > 20 %	CREEP RATE ⁽³⁾ 0.25 % H/dec	C _{DYN} ⁽⁴⁾ 50 MN/m ³

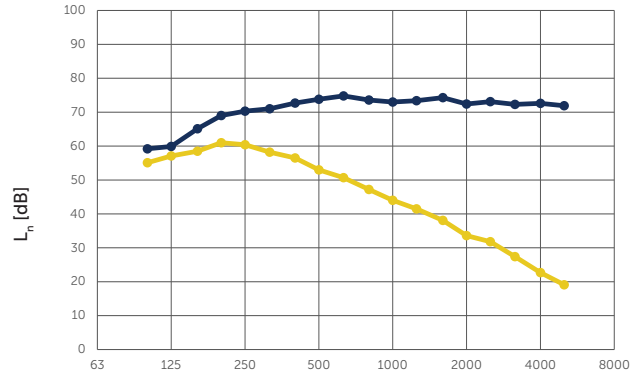
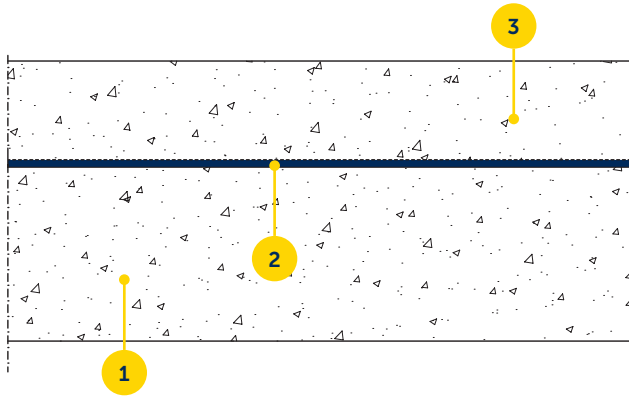
⁽¹⁾ISO 845 - ⁽²⁾ISO 37 - ⁽³⁾ISO 8013, at 0.02 MPa - ⁽⁴⁾EN 29052-1

THERMAL PROPERTIES

TEMPERATURE RANGE -30°C / 80°C	REACTION TO FIRE Class E ⁽¹⁾ / Class B2 ⁽²⁾	THERMAL CONDUCTIVITY 0.12 W/m°C ⁽³⁾	THERMAL RESISTANCE 0.038 m ² C/W ⁽³⁾
-----------------------------------	--	---	---

⁽¹⁾EN 13501-1 - ⁽²⁾DIN 4102 - ⁽³⁾EN 12667

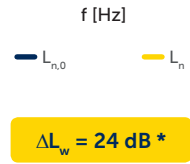
ACOUSTICAL RESULTS



Test setup + test values

1. Standard reinforced concrete floor (140 mm)
2. CDM-MTE-4.5
3. Floating floor: reinforced concrete slab (70 mm)

* Laboratory report available upon request



PHYSICAL & MECHANICAL PROPERTIES

