



**Client**  
**Main Contractor**  
**Details**

**Institute of Cancer Research**  
**Stopps Ltd**  
**2 Electron Microscopes**

• The London base for the Institute of Cancer Research is on the Fulham Road. This is a very busy road with many cars, buses and lorries. The location of the 2 highly sensitive electron microscopes was in the basement directly adjacent to the road.

• CDM-UK isolated the inertia bases using the CDM-MACHINE-FLOAT system. The completed installation allowed the operators to zoom into microscopic detail without interference from outside vibration sources.



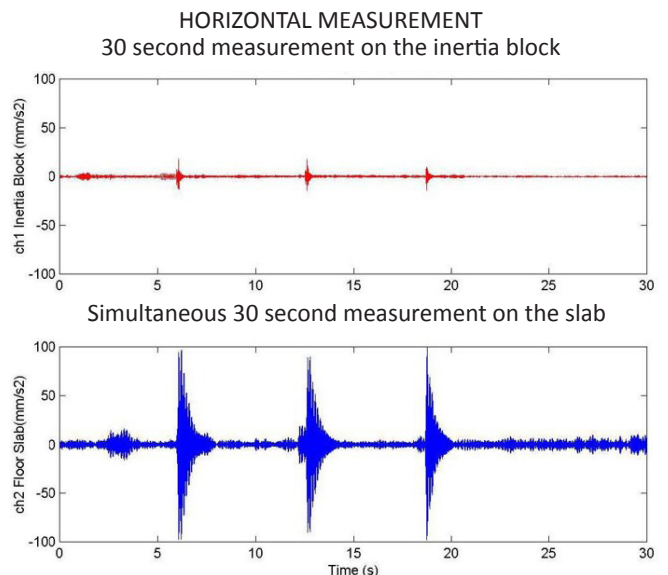
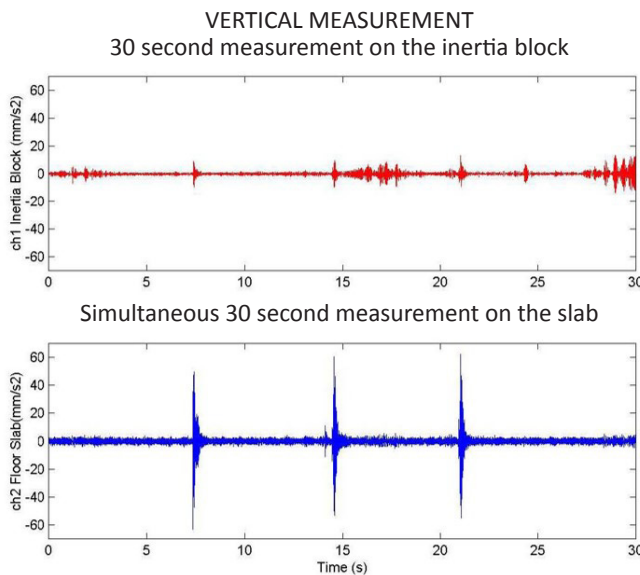
Institute of Cancer Research on the Fulham Road CR



The installation of the CDM-FLOAT + lateral isolation



Image of Electron Microscope used



Acoustic vibration measurements on and off inertia base during door slams

Industry

Project Reference